

## Important Technical Data:

- Minimum operating pressure 0.5 bar – Dependant on outlet type (open outlet)
- Maximum operating pressure 5 bar\*
- Maximum incoming cold water temperature 25°C
- Minimum incoming hot water temperature 60°C
- Maximum incoming recommended hot water temperature 80°C
- Factory default maximum 'safe zone' output temperature 46°C
- Maximum hot / cold pressure differential ratio is 5:1.

\*Note: If these pressures are exceeded, even for short periods, damage can result. In these instances a pressure reducing valve should be installed.

The incoming hot water temperature must be a minimum of 10°C above the outgoing water temperature to ensure the correct function of the thermostatic cut off.

All thermostatic products should be tested and cleaned at least once a year, inlet mesh particle filters should be periodically checked and cleaned to maintain flow. If access to mesh filters is not easy, then the filters should be omitted from the installation as shown and included in a more accessible position.

Supply pipes should maintain the maximum diameter until immediately before the fitting.

Hot and cold supply pressures should be as closely balanced as possible for best results. The differential between the hot and cold water supply temperatures should be sufficient to allow correct mixing function; the maximum hot / cold pressure differential ratio is 5:1. Where pressures are greatly imbalanced flow restricting valves or pressure reducing valves should be installed on the supply with the greater incoming pressure.

Abode products are either WRAS approved or manufactured in accordance with recognised European standards. Please ensure that your Abode product is fitted in accordance with Local Water Byelaws. Where hot and cold water mix within any product, then suitable non return valves should be installed to the hot and cold supplies to prevent backflow.

Whilst assembling this product take care not to accidentally loosen any screwed assemblies. PTFE tape can be used to ensure watertight joins on threaded connections, do not over tighten connections or allow pipes to be twisted or folded.

The installation should be periodically checked for damage, if the property is left unattended for a prolonged period we recommend isolating water supplies.

Abode is a registered trademark of Abode Home Products Limited. All errors and omissions excepted.

The logo for Abode Home Products Limited, featuring the word 'abode' in a lowercase, sans-serif font. The letter 'a' is stylized with a vertical line extending upwards from its top, and the letter 'd' has a vertical line extending upwards from its top, creating a unique graphic element.

Abode Home Products Limited,  
Unit L, Zenith Park, Whaley Road, Barnsley, S75 1HT.  
Tel: 01226 283434 Fax: 01226 282434 [www.abode.eu](http://www.abode.eu)

# Deck Mounted Flow Control Valve (2 Exit)

## 5 Year Warranty Terms & Conditions:

In the unlikely event that you should experience any defect in the materials or workmanship of your new Abode product within FIVE years of purchase, the purchaser's sole remedy shall be the replacement (at the manufacturer's discretion) of all or any part of the product that is defective. Valves are guaranteed for a period of FIVE years from purchase. Decorative surface finishes and O-rings are guaranteed for ONE year from the date of purchase provided that our advice concerning care has been observed and no scouring agents have been used.

This is provided that the product has been used for normal domestic purposes in the UK and that the care, installation and maintenance instructions have been observed. The warranty extends to the original purchaser only. You should retain a copy of your dated invoice as proof of purchase to validate any claims under this warranty.

Marks and scratches caused by improper installation or accidental damage are not covered by this guarantee. Neither are shade variations or any damage or defect caused by incorrect installation or abuse of the fitting.

As we are continuously improving and developing our products range, finishes & colours, in the event of a valid claim, we may not be able to provide an identical replacement for the defective product throughout the warranty period. Where an identical product is no longer available, we will supply the nearest equivalent from our then current product range. In assessing your claim, we must be given the opportunity to inspect the product as installed prior to removal. Any product returns must be packaged carefully as received and complete.

No other warranties, express or implied, are made, including merchantability or fitness for a particular purpose. Under no circumstances shall the manufacturer be liable for any loss or damage arising from the purchase, use or inability to use this product, or for any special, indirect, incidental or consequential damages. No liability is accepted for consequential damage to other household fixtures, fittings or furnishings arising from this claim, even if attached to the product. No installer, dealer, agent or employee of Abode Home Products Limited has the authority to modify the obligations or limitations of this warranty.

## Product Care Instructions:

To maintain the appearance of this product, ensure that it is regularly cleaned only using a clean, soft damp cloth. A solution of warm water and a mild liquid detergent may be used where necessary, and then the fitting rinsed thoroughly and wiped dry. Any other cleaning action or cleaning products will invalidate your warranty.

Abrasive cleaners, scouring cleaners, limescale cleaners and acidic cleaners **must not be used** under any circumstances. Avoid contact with all solvents (including chlorinated solvents, ketones or acetones as these may result in surface deterioration or etching). Also avoid contact with any harsh household chemicals such as bleach cleaners, drain cleaners, rust removers, paint strippers and toilet bowl cleaners, toothpaste, mouthwash, bar keepers friend or Brasso.

The logo for Abode, featuring the word "abode" in a lowercase, sans-serif font. The letter 'a' is stylized with a vertical line extending upwards from its top.

**Please leave these instructions for your customer.**

Installation Preparation:

All parts should be removed from their packaging and inspected for any transport damage and completeness prior to installation; you should read these instructions throughout before commencing installation.

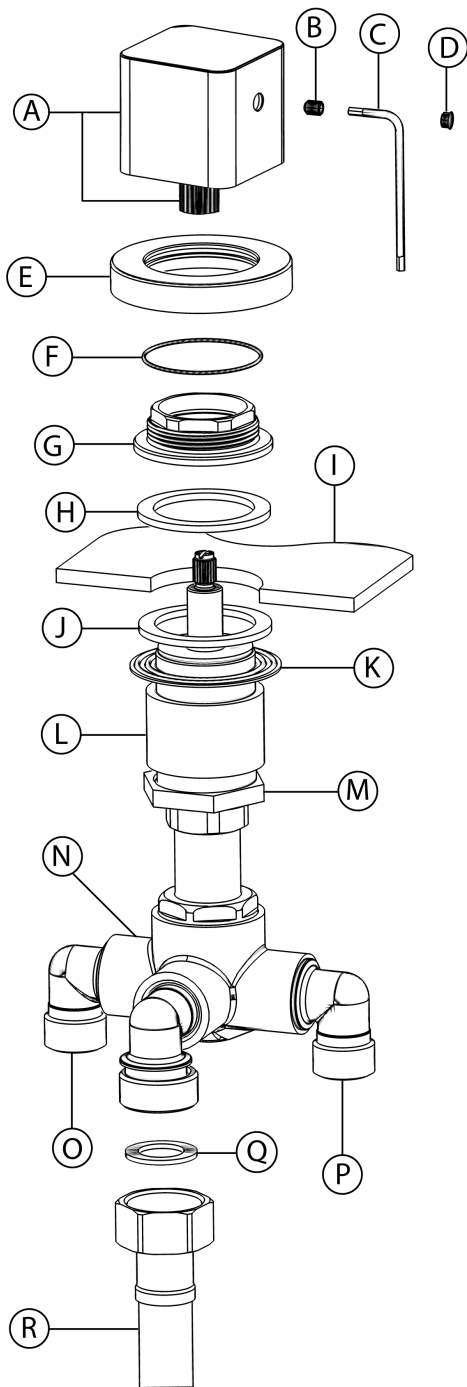
We do not accept responsibility for problems that may occur through improper installation. Always ensure you have sufficient hot and cold water pressure available to allow correct function before specifying or installing this product.

We strongly recommend installing particle filters and isolation valves to both the hot and cold feed pipes in an accessible position. This will help to prevent premature failure of the valves and ease any future maintenance.

Shut off your water heating system and ensure that your mains stopcock is closed. Ensure both the hot and cold water supplies are isolated before commencing installation.

It is recommended to roughly position where the controls will be located for the centre locations before preparing the tap holes.

Installation Guidance:

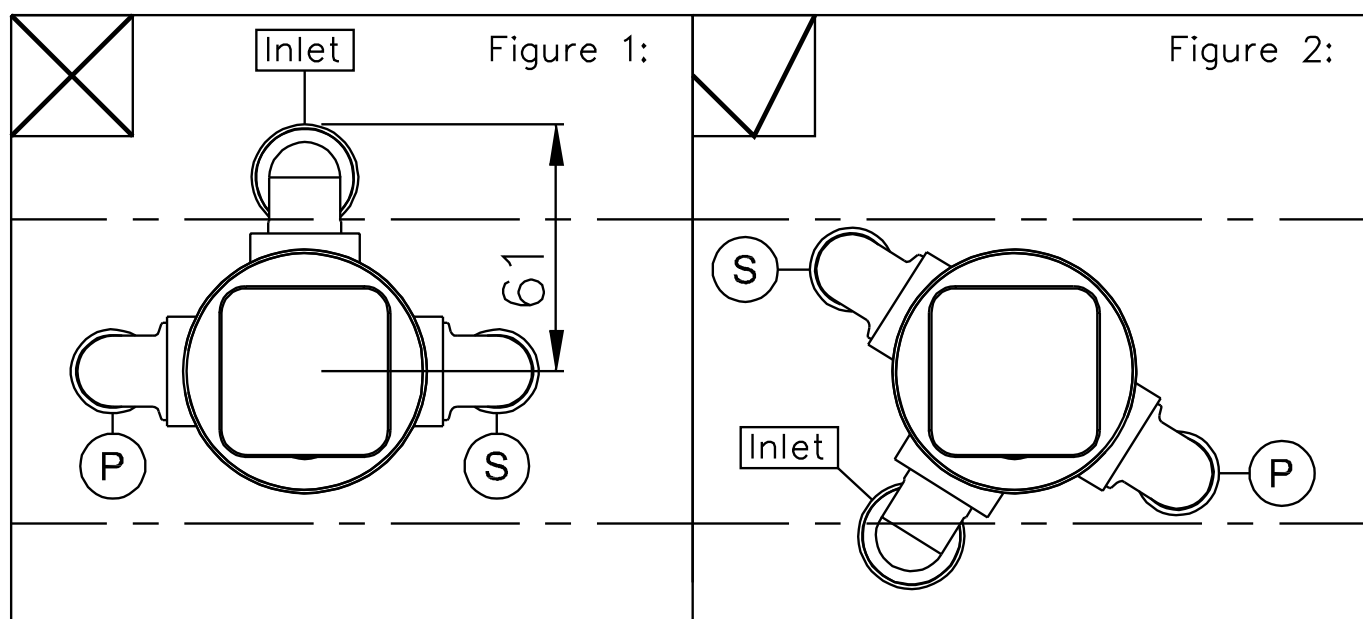


Key	Description	Qty.
A	Handle + plastic insert (Design varies)	1
B	Grub screw (Dependant on model)	1
C	Allen key (2.5) (Dependant on model)	1
D	Cover (Dependant on model)	1
E	Base plinth	1
F	Ring seal	1
G	Top nut	1
H	Upper seal (Foam)	1
I	Bath	0
J	Lower seal (Foam)	1
K	Metal washer	1
L	Valve stem spacer	1
M	Fixing nut	1
N	Flow control valve	1
O	D = Shower – Lower flow rate exit	1
P	V = Bath – Higher flow rate exit	1
Q	Rubber seal	1
R	Tail pipe ¾" F x ¾" F (Inlet from thermostatic valve)	1

## Installation Instructions:

1. Before installation it is advisable to check the alignment of valve (N) so that it is positioned in the off position.
2. Create hole in bath (I), diameter between 34 – 40mm.
3. Pass the top of the flow control body (N) through the tap hole from the underside, ensure that the lower seal (J) is flush with the bottom of bath (I) as shown. Use spacer (L) depending on thickness of bath.
4. Whilst holding flow control body (N) securely screw top nut (G) onto the top of flow control body (N) making sure upper seal (H) is flush with the top surface of top bath (I).
5. With the flow control body (N) centrally positioned to the tap hole, and whilst holding flow control body (N) tighten fixing nut (M) fully using an adjustable basin spanner or similar.
6. Connect tail pipe (R) to the inlet using washer (Q).
7. Connect outlets (O, P) to the water outlets (e.g. bath/shower) using ½" BSP connections.
8. Push the base plinth (E) and ring seal (F) onto top nut (G) as shown.
9. Align the handle to the valve off position, then depending on the model either:
  - I. Tighten handle into place using grub screw (B) allen key (C) and cover (D).
  - II. Push fit handle (A) over top of thermostatic body (N) flush with top of base plinth (E).

**\*If tap deck space is limited where the inlet (Figure 1) will not fit inside a limited area, please refer to (figure 2) as shown below:**



**Note: Please refer to dimension given (61mm) when marking out the tap hole centre locations.**

### After installation:

Once you have visually checked the installation of the new product and all connections, ensure that all other fittings are closed except the new product which should be left open. Turn on your water heating system and ensure that your mains stopcock is open. Reconnect both the hot and cold water supplies to this fitting.

Check the function of flow and function of hot, cold and mixed water, where possible check the function of the thermostatic valve maximum temperature, and shut off function by interrupting the cold water source during use.

Turn off the product and check carefully for any leaks around all connections on the fitting and adjoining plumbing. If possible return to the installation after a longer period to double check for slower leaks. If pressure testing equipment is available check the installation to the maximum recommended pressure.

Clean the product to remove any marks created during installation as instructed, now cover the product to protect the finish until it is ready for use.